

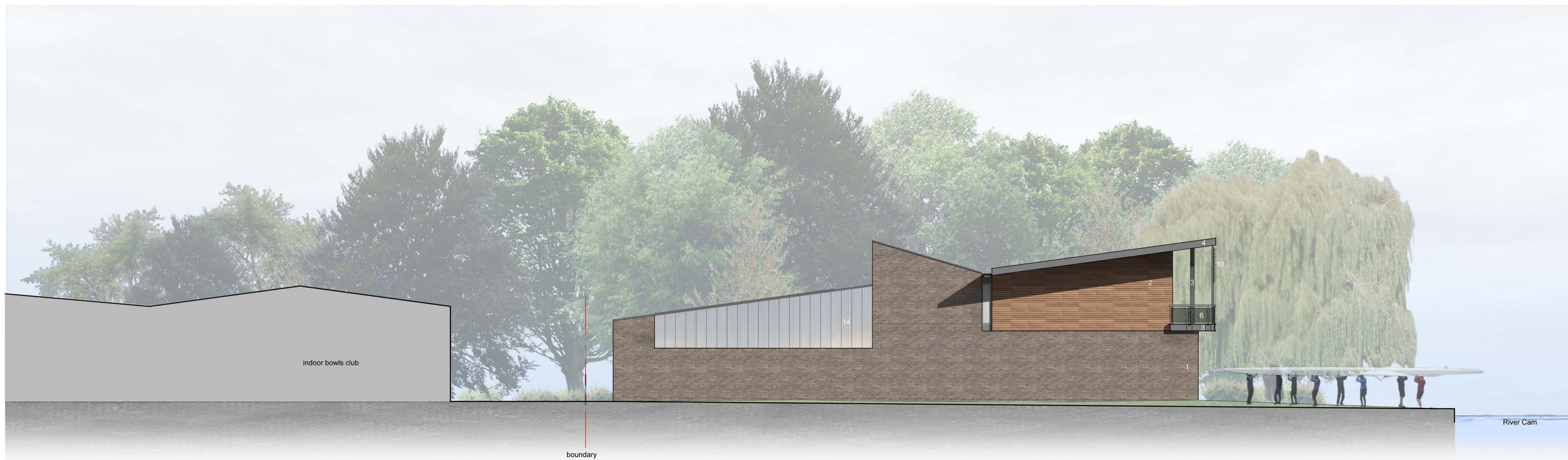
Notes

Materials Schedule

- 1. brown/grey high quality facing bricks
- 2. stained cedar boarding timber cladding
- 3. galvanised steel edge, tie rods and columns
- 4. mid-grey polyester powder coated (PPC) aluminium fascias
- 5. fibre cement board soffit
- 6. galvanised balustrades, glass panels & timber hardwood handrails
- 7. PPC aluminium electrically operated upward opening boat bay doors
- 8. PPC aluminium glazed sliding doors
- 9. timber louver vents
- 10. hardwood louvers supported on galvanised steel rods & columns
- 11. mid-grey PPC aluminium windows
- 12. galvanised stair & ramp open framed
- 13. PPC aluminium sliding folding workshop doors
- 14. translucent panelling
- 15. PPC aluminium louvers
- 16. PPC aluminium doors
- 17. PPC aluminium dark-grey coping trim
- 18. aluminium standing seam roofing incorporating rooflights
- 19. two-way flood vent flaps
- 20. PPC aluminium glazed door



east elevation



west elevation

02 2014.06.02 west elevation balcony omitted BG RC

01 2014-03-18 BG RC

Rev Date + notes Drawn Chkd

r h partnership architects
 94 Chesterton Road Cambridge CB4 1ER
 T 01223 316309 F 01223 324152
 www.rhpartnership.co.uk
 cambridge@rhpartnership.co.uk

Project
Combined Colleges Boathouse
 Logan's Way, Cambridge
 CB4 1BL

Drawing
Proposed Elevations
 East & West

Project Ref	Day No	Revision
CLO	2112	02
Scale(s)	Size	Drawn
1:125 @ A1 1:250 @ A3	A1	BG RC

Status
Planning

